



MY ADVENTURE  
THROUGH THE  
DIGESTIVE SYSTEM AS  
A PICKLE :~!

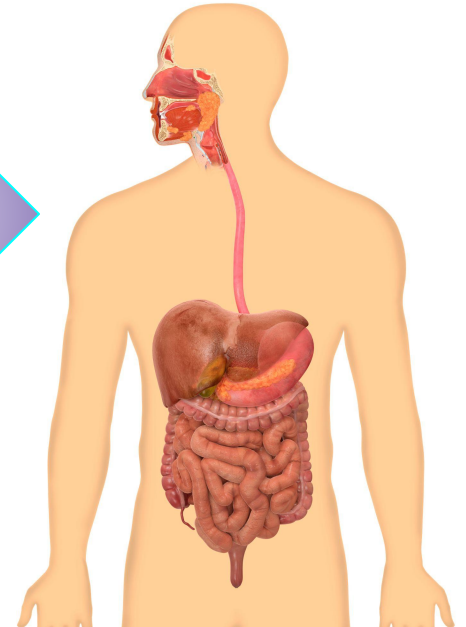


ariella shindelman  
Science  
April 16, 2021



Hi !!! I'm a pickle! Today's an exciting day !  
I'm going to be entering a person's  
Digestive system! It's going to be really fun .  
I am claustrophobic but it's a good thing i'll  
get out eventually. Ill be recording what  
happens throughout my journey for you to  
see!! Let's goooo!

This is what the  
digestive system  
looks like!!





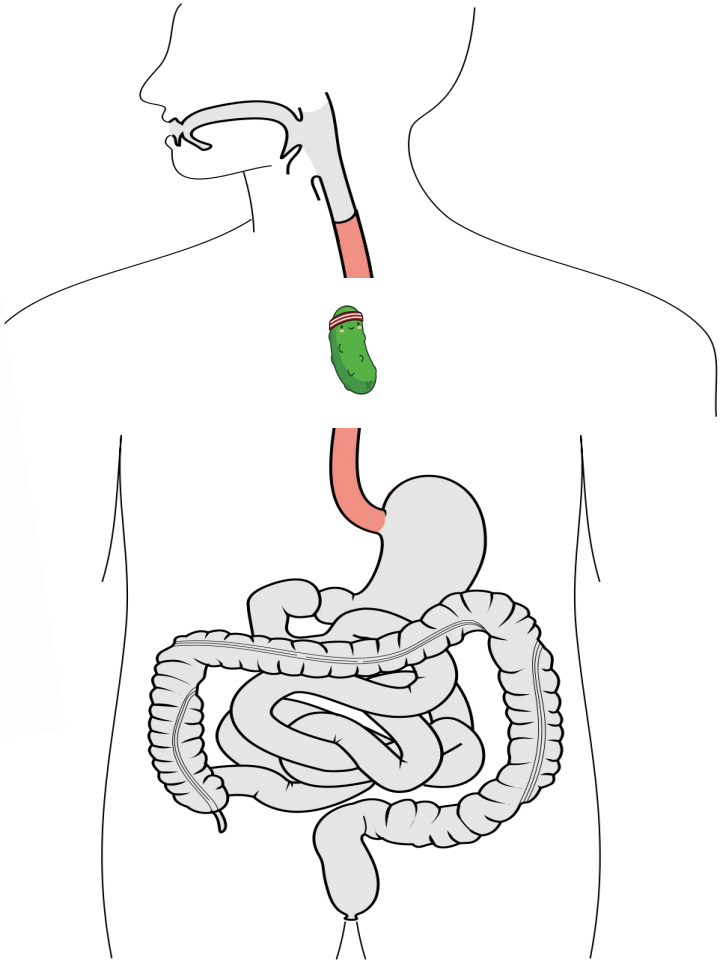
Look ! There's the mouth . When I enter the mouth , the person's tongue, teeth and saliva will work to change me into a soft mass.

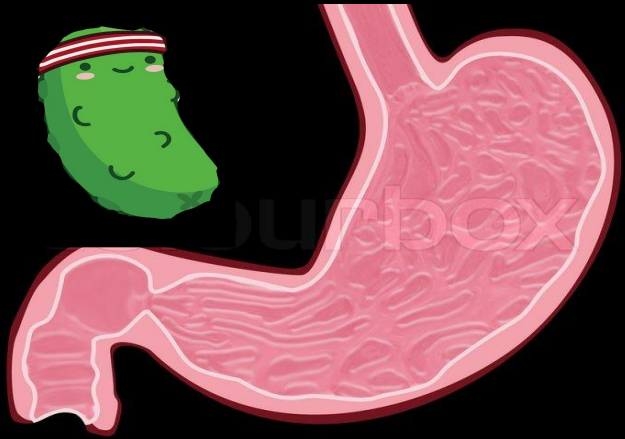
A pickle!!

I'm hungry:D



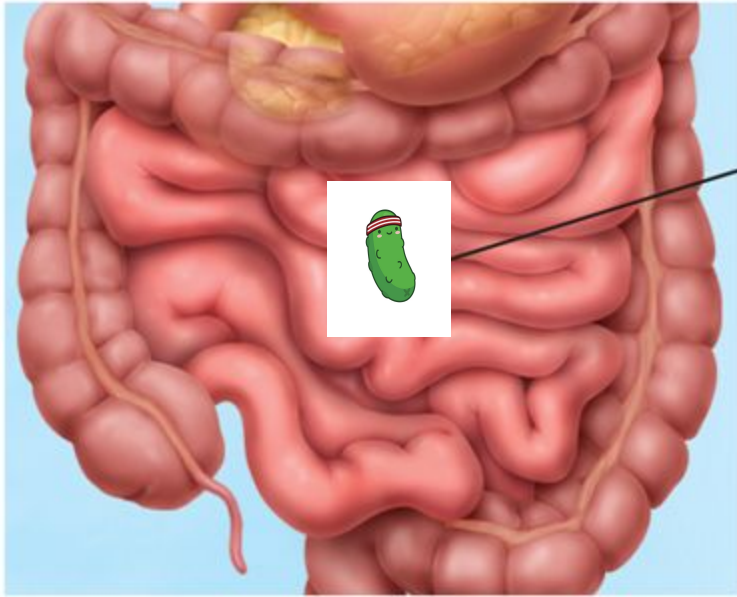
We are in the esophagus now!  
The esophagus as you can see is a long  
tube that doesn't really do much other  
than take me to the  
stomach.  
Peristalsis squeezes  
your esophageal  
muscles from top to  
bottom. It pushes food  
and liquid along.





We are in the stomach now !! The stomach is a muscular sac that turns food into a watery, thin liquid. This liquid is called chyme!! There are also gastric juices in the stomach that help break down food that leads to the intestine.

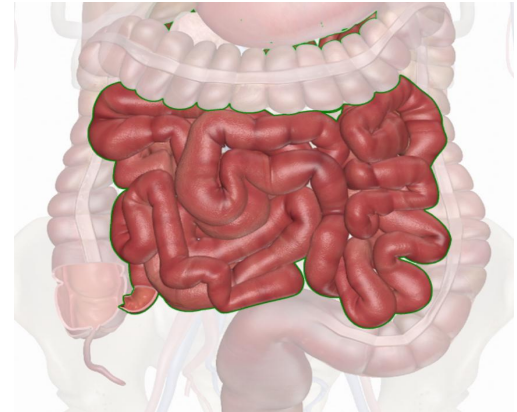
Also ! The mechanical digestion is by Peristalsis, and the chemical digestion is by enzymes!!

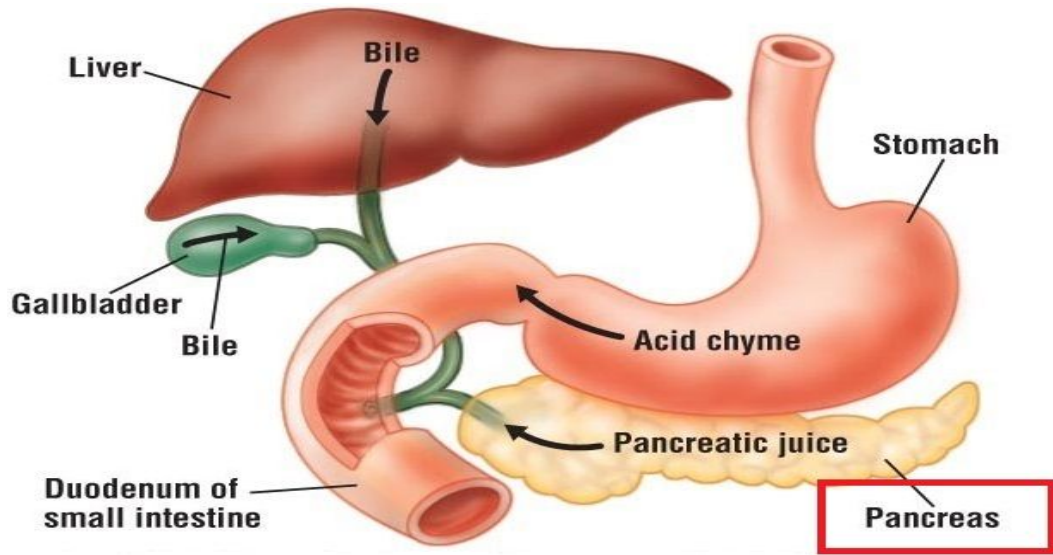


Small  
intestine

I'm in the small intestine! The small intestine is a long, squiggly tube with a small diameter that functions in chemical digestion and nutrient absorption.

The small intestine breaks down food from the stomach and absorbs the nutrients from the food!





Update: we are still in the small intestine but in here I see all kinds of the small intestines accessory organs! Let me show you :

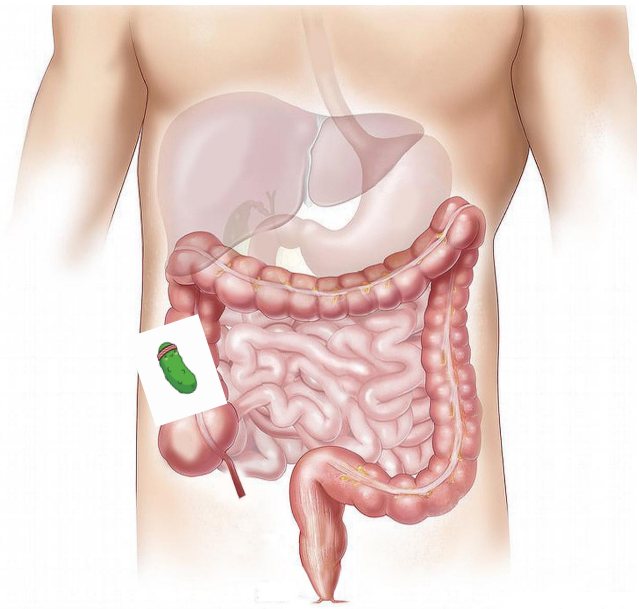
The liver which is above the stomach is a brownish organ that makes bile

The gallbladder is right under the liver that stores bile. The bile is then released into the small intestine and helps break down fat

And the pancreas, which is right under the stomach, makes digestive enzymes and insulin that regulates blood sugar



I brought a clock with me because I'll last in the large intestine for 36 HOURS!!



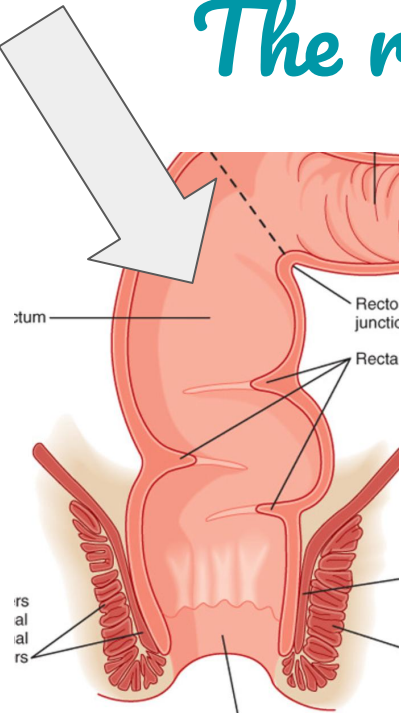
The large intestine is the organ after the small intestine that absorbs water from undigested chyme.

Chyme can be in the large intestine to a long as 3 days !!!

Also ! The appendix is a sac attached to the large intestine that is known for providing immune support for the body.



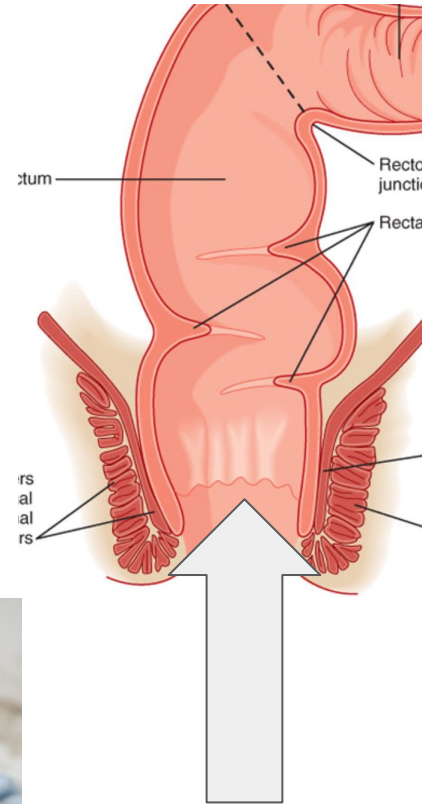
# The rectum!!



I'm in the rectum now ! The rectum controls the release of waste. This is where I'll stay until baby needs to go to the bathroom :)

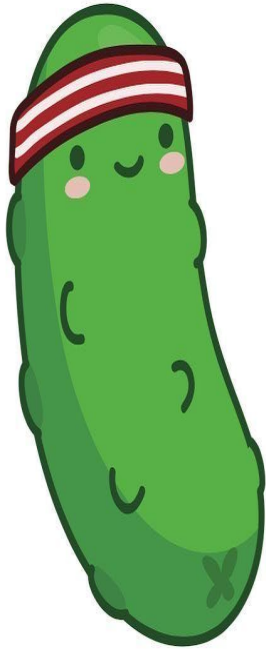


# The anus!!



And we are in the opening of the waste ! The anus !! The anus opens up and this is what lets me out !





There's me ! Baby went  
to the bathroom and  
everything came out !  
This is the last step of  
the digestive system !  
Welp, see you next  
time !

